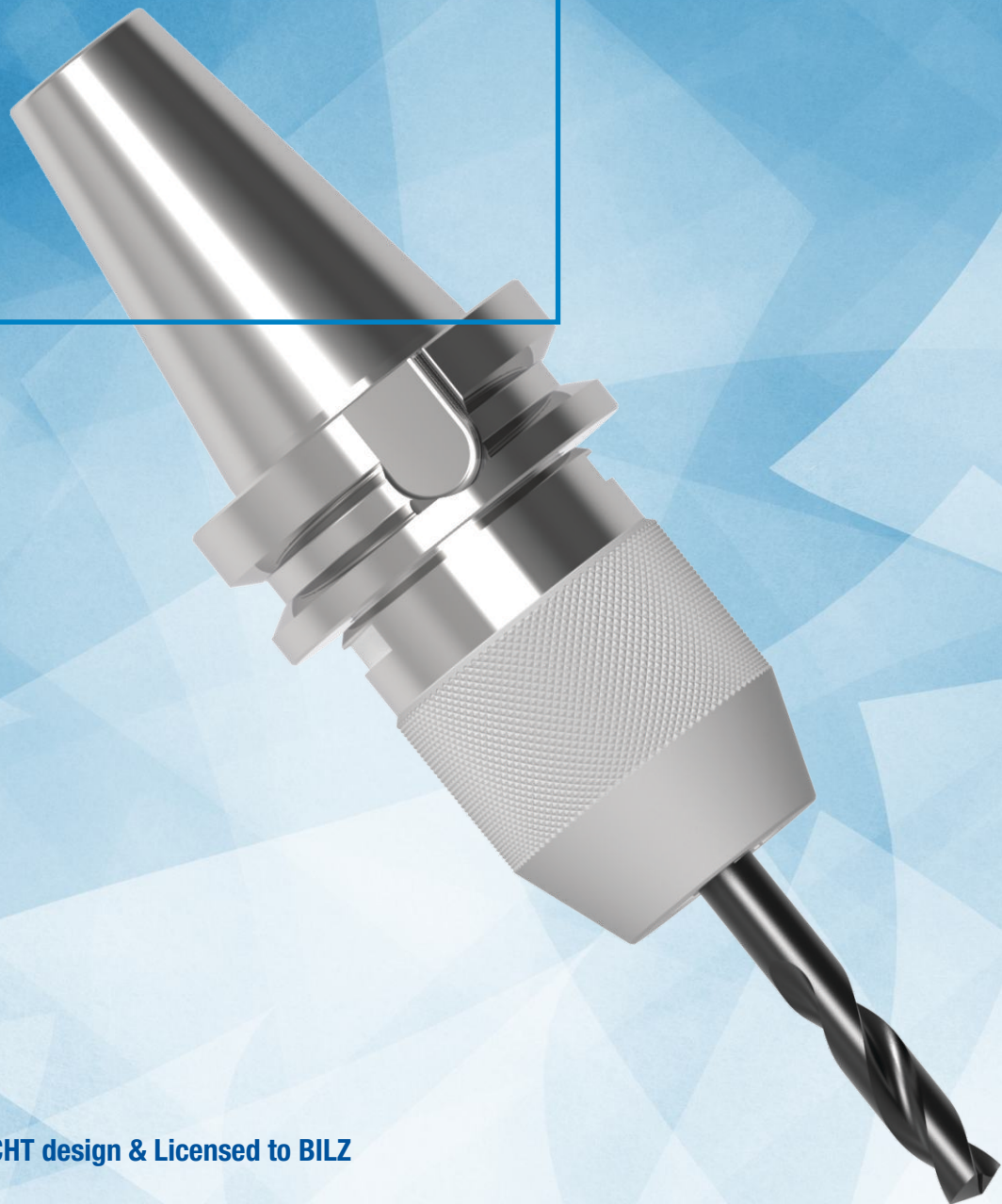


ALBRECHT
Precision Chucks

bilz

Precision Keyless
Drill Chucks



Original ALBRECHT design & Licensed to BILZ

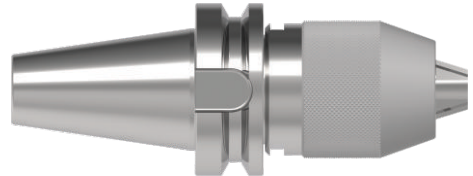
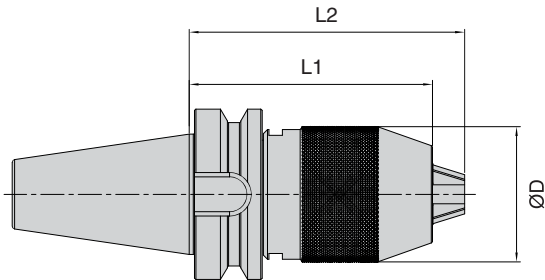
Features:

- Integral shank design is more compact than a combined drill chuck and arbor, resulting in:
 - high accuracy
 - high rigidity
 - larger work envelope
- A unique self-tightening feature that grip drills tighter as more torque is applied
- Integral design eliminates the possibility of a chuck slipping on its arbor
- It works only in clockwise rotation and not suitable for thread cutting.
- This unit is often less expensive than a separate chuck and arbor
- Keyless operation
- Self-tightening design
- Run-out accuracy within 0.05mm tested over the whole clamping range
- Design balanced at max. 7000 RPM
- Repair service, all spares are available and chuck will be refurbished and guarantee of runout



Precision Drill Chuck

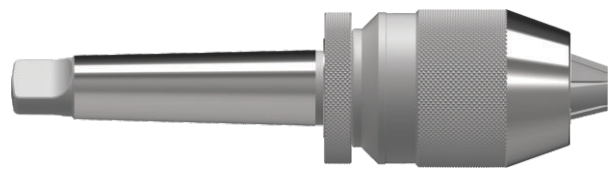
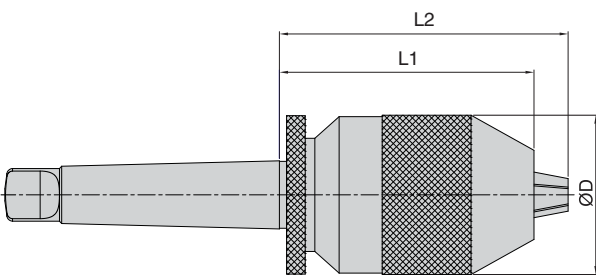
The self-tightening drill chucks with integrated BT, SK, HSK & CAT tapers, built for semi-automatic machines. Quick tool change.



Taper	Range	L1 (mm)	L2 (mm)	D (mm)	Designation	Ident No.
BT30 (JIS B 6339 / MAS 403)	1-13	116	128	50	WDC/1-13-116/BT30	66657334M
BT40 (JIS B 6339 / MAS 403)	1-13	92	104	50	WDC/1-13-92/BT40	66657335M
BT50 (JIS B 6339 / MAS 403)	1-13	103	115	50	WDC/1-13-103/BT50	66657336M
SK30 (DIN 69871 / ISO7388-1)	1-13	117	129	50	WDC/1-13-117/SK30	66657337M
SK40 (DIN 69871 / ISO7388-1)	1-13	86	98	50	WDC/1-13-86/SK40	66657338M
SK50 (DIN 69871 / ISO7388-1)	1-13	84	96	50	WDC/1-13-84/SK50	66657339M
HSK-A63 (DIN 69893)	1-13	135	147	50	WDC/1-13-135/HSK-A63	66657340M
HSK-A100 (DIN 69893)	1-13	140	152	50	WDC/1-13-140/HSK-A100	66657341M
CAT40 (ANSI B 5.50)	1-13	100	112	50	WDC/1-13-100/CAT40	66657342M
CAT50 (ANSI B 5.50)	1-13	84	96	50	WDC/1-13-84/CAT50	66657343M

Precision Drill Chuck (with MK shank)

The self-tightening drill chucks with integrated morse taper, built for manual machines. Quick tool change.



Form	Range	L1 (mm)	L2 (mm)	D (mm)	Designation	Ident No.
MK2 DIN228	1-13	85.0	97.0	50	WDC/1-13-85/MK2	66655211M
MK3 DIN228	1-13	85.0	97.0	50	WDC/1-13-85/MK3	66655212M
MK4 DIN228	1-13	86.5	98.5	50	WDC/1-13-86.5/MK4	66655213M

Further development changes in terms of technical progress remain reserved. Possible printing errors or intermediate changes of all kinds do not entitle to any claims.

Note: All the above products are for sale only in India



OTTO BILZ (INDIA) PVT. LTD.
5A-5B/6A, KIADB Industrial Area
Doddaballapur - 561203
Deutschland / Germany
Tel +91 080 22638700
Fax +91 080 22638702
sales@bilzindia.com
www.bilz.in



*Produktions- und Vertriebsstandorte der LEITZ-Group
Production and sales locations of the LEITZ Group*

- **Bilz**
- **Boehlerit**
- **Leitz**